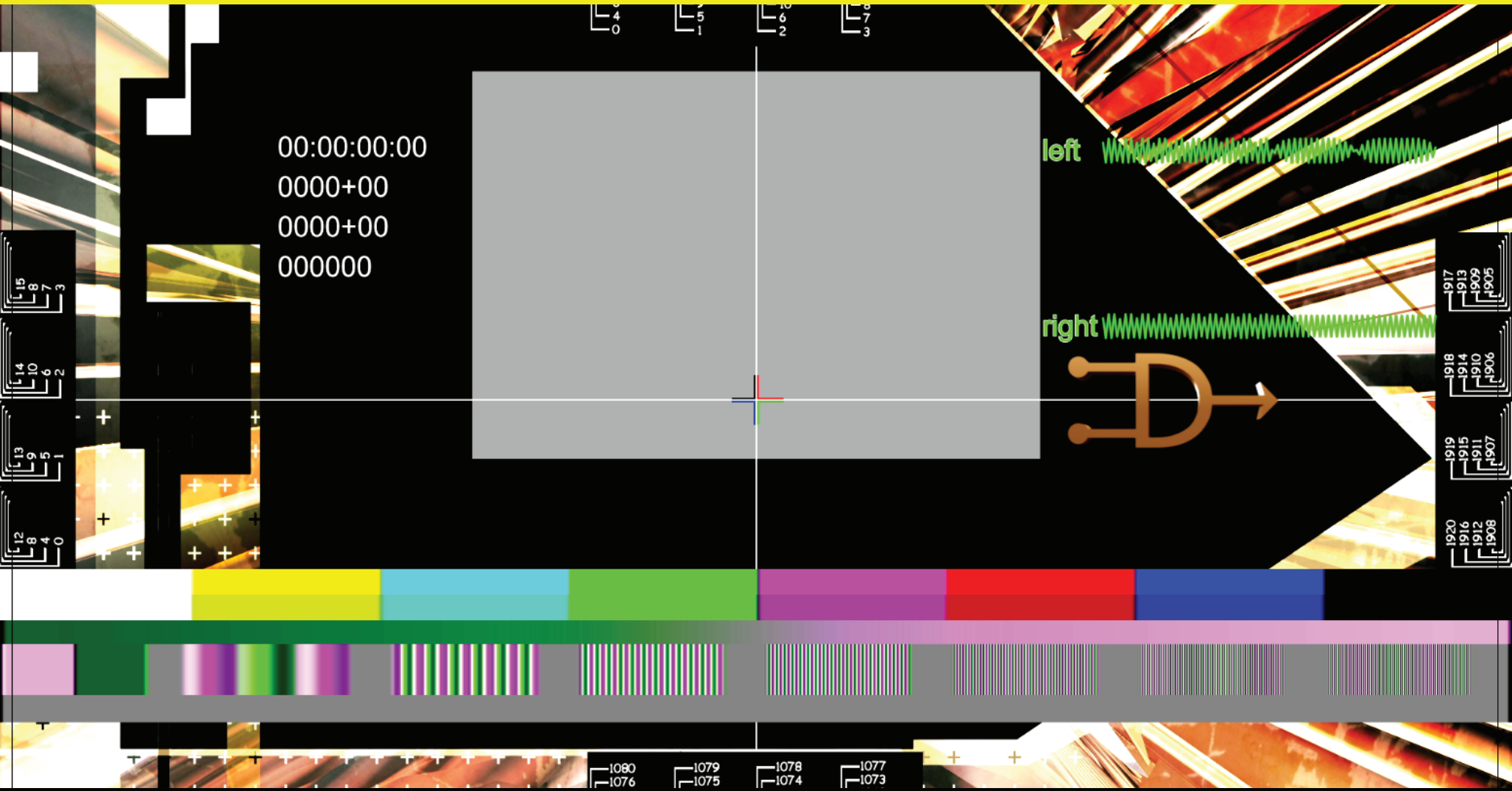


Product Catalog 2025



INGEST & TRANSCODE



The Net-X-Code Suite provides tools for IP communication infrastructure and RESTful API, unicast and multicast IP video capture and conversion, an IP Video streamer, transcoding, partial file restoration and a real time player with clipping.

Net-X-Code Server includes Media-Reactor, ccConvert, and videoQC.

Net-X-Code

Net-X-Code Server - multichannel IP stream and SDI/HDMI ingest, transcode, and output. Includes Net-X-Code, Net-X-Base, Net-X-Convert, Net-X-SDI, Net-X-Schedule, Net-X-Player, Net-X-Stream, Net-X-Server, ccConvert, videoQC, and MediaReactor Workstation DRS-NTS-V7...\$9,995.00 US

Net-X-Code Channel - provides a single channel add on within a Net-X-Code Server cluster. This add on requires at least one Net-X-Code Server to operate. DRS-NTX-V7...\$2,495.00 US

* first install of Net-X-Code Server requires \$2,500.00 US commissioning fee

Media File Scanner

Media File Scanner - Scans local, network, or cloud storage for media files and camera cards, and performs conversions, proxies, REST calls etc. This add on requires at least one Net-X-Code Server to operate. DRS-MFS-V7...\$7,495.00 US

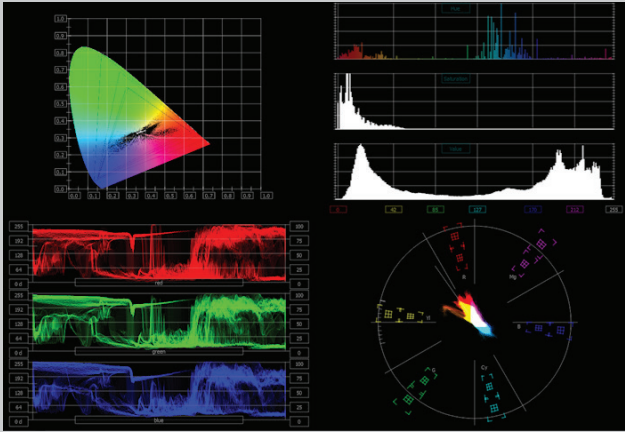
Net-X-Convert

Net-X-Convert - command line transcoding to all standard files plus all codecs. Includes Net-X-Proxy. NTX-CNV-V7..\$2,495.00 US

Net-X-Proxy

Net-X-Proxy - command line transcoding to proxy files. NTX-PRX-V7...\$895.00 US

SIGNAL ANALYSIS



Signal analysis tools featuring Waveform, vectorscope, histogram, chromaticity, audio, data and picture modes, with up to 6 scopes at a time, including full BT.2020, Rec.709, CCIR-601, and RGB color space. AJA, Bluefish444 and Blackmagic hardware support, with ScopeDirect editor output analysis

2110Scope

2110Scope - provides a range of professional audio and video waveform/ vectorscope tools, designed for ST-2110 signals. Includes all the features of the other scopes, and adds IP Timing display.
 NVA-REL-V7..\$1,995.00 US

* Requires one of the following environments for SMPTE 2110/2022 support:

- Matrox: ST 2110 Network Adapters
- AJA: Kona IP
- Mellanox NVIDIA Bluefield-2 or Connect-X 6: (requires Rivermax license)

HDRScope

HDRScope - signal analysis and review for up to up to 8K signals. Provides Picture, Vectorscope, Waveform, Histogram, Chromaticity, Status, and various Audio Scopes. Includes 4KScope features, and adds Composite/Overlay, MaxCLL/MaxFALL display
 8KS-REL-V7...\$895.00 US

4KScope

4KScope - signal analysis and review for up to up to 4K/HDR signals. Provides Picture, Vectorscope, Waveform, Histogram, Chromaticity, Status, and various Audio Scopes. Adds CC/XDS display, web server, error log, region/line select, ScopeDirect for editors
 4KS-REL-V7...\$495.00 US

sdiScope

sdiScope - signal analysis and review for SD/HD signals. Provides Picture, Vectorscope, Waveform, Histogram, Chromaticity, Status, and various Audio Scopes.
 SDS-REL-V7...\$149.00 US

IP STREAMING



FlowCaster provides IP based real time group review and collaboration tools for viewing IP streams over the internet.

The flowcaster.live site provides collaborative tools for review & approval workflows

NETXROUTER routes up to 16 SRT, UDP, RIST, and RTP streams in and out, with on the fly transcoding

FlowCaster

FlowCaster - Review and approval solution, with secure high quality feed from creative software, signal, or file, to remote users. Streams include audio, video, captions, Anc and HDR signalling.

Provides Adobe/Avid/Resolve Plugin and Adobe Live Review CEP panel, BLS, CDI, HLS, NDI, RIST, RTMP, RTP, SRT, ST-2110, UDP, and WHIP output, FC VirtualCam Output, Hardware Input, Software Input, Cloud Storage setup, Encryption / Watermark /Time Code Burn-in setup.

FLO-VWR-V7..\$495.00 US

FlowCaster.live

Personal Support: \$49.00 US per month (minimum term of 3 months) or \$495.00 US per year, supports one user with FlowCaster tools. Designed for the editor to interact with a creative team.

FLS-PERS

Corporate support: \$795.00 US per year up to 5 users. Designed for larger production facilities with multiple editors. Additional sets of up to 5 can be added as required.

FLS-CORP

FlowCaster Server: \$15,000.00 US per year plus plugins, supports up to 150 users. Designed for enterprise level workflows. For greater than 150 users, contact Drastic for a quote. Can be hosted by Drastic or the client.

FLS-SERV

NETXROUTER 8/8

NETXROUTER 8/8 - Provides 8 channels of SRT/RTP/UDP/RIST input, and 8 channels of SRT/RTP/UDP/RIST output. Each input may be sent to multiple outputs, in any of the supported formats, until all 8 inputs and 8 outputs are in use.

NXR-8x8.....\$11,995.00 US

NETXROUTER 16/16

NETXROUTER 16/16 - Provides 16 channels of SRT/RTP/UDP/RIST input, and 16 channels of SRT/RTP/UDP/RIST output. Each input may be sent to multiple outputs, in any of the supported formats, until all 16 inputs and outputs are in use.

NXR-1616.....\$23,995.00 US

MEDIA PLAYER



videoQC provides a range of capabilities from file/stream playback, metadata, and closed caption viewing, to robust Quality Assurance with export, comparisons and reports, a complete set of scopes, support for hardware output, metrics charting, full reference comparison, templating tools and more.

videoQC

videoQC View - simple media player with a limited range of features. Supports all standard files.
VQC-VWR-V7....\$99.00 US

videoQC Pro - Pro version, adds audio and video scopes, closed caption display, SDI HDMI output, hex/decimal pixel display
VQC-PRO-V7...\$495.00 US

videoQC Inspect - for deeper file inspection, adds file clipping/export, audio routing, metric charting, automated comparison, serial control
VQC-INS-V7....\$895.00 US

videoQC

videoQC Workstation - complete quality control solution, includes all the features of the other versions, provides automated metric generation, HTTP, single analysis, and full reference comparisons
VQC-WKS-V7.\$1,495.00 US

videoQC Server* - Includes Net-X-Cmd, Net-X-Base, Net-X-Copy/Convert/Proxy, Net-X-SDI, Net-X-Schedule, Net-X-Player, Net-X-Stream/Net-X-Code, Net-X-Server, ccConvert, videoQC, MediaReactor Workstation. Available for Windows, and CentOS/Red Hat.
DRS-VCQ-V7..\$9,995.00 US

* first install of videoQC Server requires \$2,500.00 US commissioning fee

Options

- Licensable Codecs**
- JPEG2000 Codec Option** - provides real time support for HD JPEG2000 1080p60
OPT-JP2.....\$250.00 US
 - Avid DNxHD/DNxHR Codec Option** - provides support for Avid DNxHD/DNxHR codec in videoQC View
OPT-DNX.....\$50.00 US

FILE FORMAT PLUGINS



MediaReactor provides plugins and transcoding tools for a wide range of broadcast and production files, so editors and broadcasters can access and use their media.

Versions for most editors, as well as more comprehensive solutions available.

MediaReactor

MediaReactor Workstation for Adobe - plugin provides full standard range of formats for Adobe software
MRW-ADB-REL-V7..\$495.00 US

MediaReactor Workstation for Avid - plugin provides full standard range of formats for Avid software
MRW-AVD-REL-V7..\$495.00 US

MediaReactor Workstation for Autodesk - plugin provides extended read formats for Autodesk software
MRW-AUO-REL-V7..\$495.00 US

MediaReactor Workstation for Assimilate - plugin provides extended read formats for Assimilate software
MRW-ASM-REL-V7..\$495.00 US

MediaReactor Dolby Vision for Adobe - plugin provides Dolby Vision support in Adobe software
MRW-DBV-REL-V7..\$495.00 US

MR Lite

MediaReactor Lite for Adobe - provides a limited number of read and write formats for Adobe
MRL-AD1-V7....\$99.00 US

MediaReactor Lite for Avid - provides a limited number of read and write formats for Avid
MRL-AV1-V7....\$99.00 US

Options

Licensable Codecs
Avid DNxHD/DNxHR Codec Option - provides support for Avid DNxHD/DNxHR codec in videoQC View
OPT-DNX.....\$50.00 US

OEM PRODUCTS



Drastic OEM products allow third party enterprises to build the extensive capabilities of Drastic input and output software into their application for custom, integrated or branded products.

Available for qualified OEMs and integrators.

DTMediaRead

DTMediaRead SDK - allows the user's application to read/play Drastic formats, includes NRE
 S02-SDK.....\$3,000.00 US

DTMediaRead Seat License - per install seat license
 S01-LIC.....\$495.00 US

DTMediaWrite

DTMediaWrite SDK - allows the user's application to write/record Drastic formats, includes NRE
 S03-SDK.....\$3,000.00 US

DTMediaWrite Seat License - per install seat license
 S03-LIC.....\$795.00 US

DTMedia Read/Write

DTMediaRead/Write Seat License - provides for one instance of installed application containing both DTMediaWrite and DTMediaRead components. Requires purchase of both DTMediaRead and DTMediaWrite SDKs.
 S04-LIC.....\$1,100.00 US

Drastic Technologies Ltd. Technical Support Program Terms

Overview: The Drastic Technologies Technical Support Program has three tiers. The first tier is the Standard Support program which all customers qualify for after purchase. The second tier is the Drastic Maintenance and Support Program available for an annual fee. The third tier is Enterprise Support, available only for major customers. Here are the details of each tier:

Standard Support: Provides technical support by phone or email for ninety (90) days from the date of activation of the software. Support by phone and email is available from 9:00 AM to 5:00 PM Eastern Time. Bug fixes are provided free of charge even after the standard support term has expired. After the ninety-day period has elapsed phone-in or email services are available:

- Initial consultation - up to 30 minutes free
- Further phone support - \$85.00 US per half-hour minimum.

Optional Addition: On-site Technical Support/ Initial Installation and/or Training Package (US and Canada) are available to clients on all levels of support.

- \$3,500.00 US each day for the first two days
- \$2,500.00 US for each subsequent day
- Travel and accommodation extra

The Drastic Maintenance and Support Program: provides enhanced technical support, fixes, improvements and upgrades, including:

- There is no charge for all phone or email support
- Installation support
- Client's emails will be reviewed and responded to out of office hours when possible
- Making code changes specific to the client's workflow (within reasonable cost parameters)
- Access to advanced beta versions for new features
- Direct access to the development team as needed for the resolution of any issues
- Any customer bugs will be given higher priority in the development queue
- Enhancement requests to the product will be given higher priority in the development queue
- All software version upgrades are available at no cost

Cost: 15% of the product's retail price, per year, term beginning at date of licensing.

Enterprise Support: Available only for major customers. In addition to all of the benefits provided by the Drastic Maintenance and Support Program, it provides the following enhanced benefits at no additional cost.

- 24/7 phone support
- The client's technicians have direct email and phone access to Drastic's development personnel
- Front-of-the-line status for the client's new feature/product enhancement requests
- Support on 3rd party applications
- 25% discount on on-site support costs (excluding travel and accommodation)
- Custom training resources



Drastic Technologies Ltd. Maintenance and Support Program Details

Contact	No Support	15% Support	15% Enterprise Support
Email via support personnel (within 48 hrs)	X	X	X
Email via support personnel (same day)		X	X
Email via development personnel			X
Phone 9:00 am to 5:00 pm Monday to Friday EST		X	X
Phone 24/7/365			X
Meetings (ad hoc) up to 6 per year		X	
Meetings (scheduled) as needed			X
Remote Logins		X	X
Live Interactive Debug			X
Remote Install/Customization			X
Customer support delegate			X
Upgrades	No Support	15% Support	15% Enterprise Support
Hot Fixes (per Drastic)	X	X	X
Minor updates released by Drastic	X	X	X
Discount Price on New Version	\$		
New Versions - Free		X	X
Features/Bug Fixes	No Support	15% Support	15% Enterprise Support
Report via email	X	X	X
Report via phone/message		X	X
Top priority		X	X
Front of line feature requests			X
Priority feature requests		X	
Pay as you go feature requests	X	X	X
SDK Support		X	X
Training/Info	No Support	15% Support	15% Enterprise Support
Web Site TTT - Guides	X	X	X
Remote Training		X	X
Custom Training Resources			X
3rd Party Support	No Support	15% Support	15% Enterprise Support
Assistance with 3rd party hw/sw			X
Custom connection work			X
Private documentation			X